



AD Education and Skills – Recruitment

Additional Candidate Information

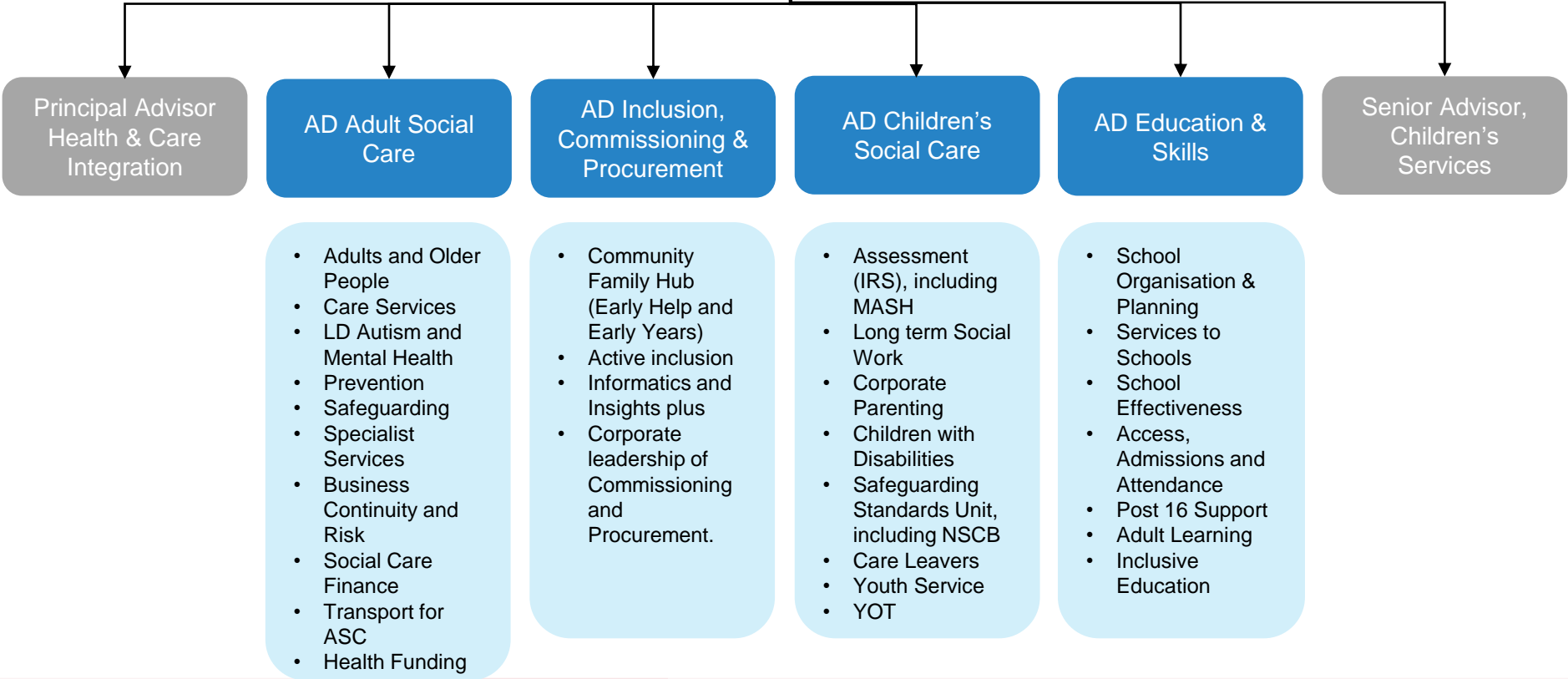
October 2018



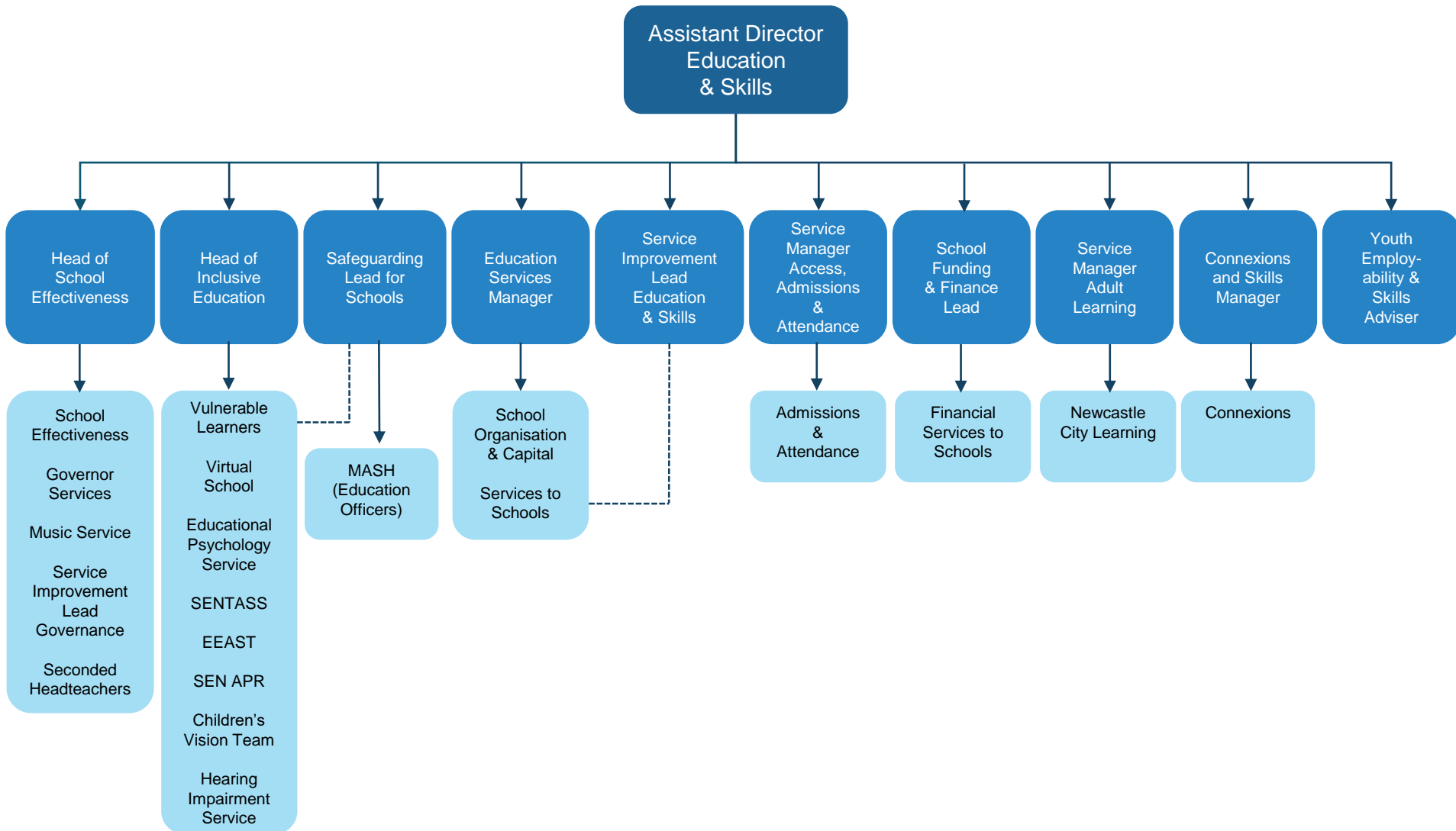
People Directorate structure chart



Director for People



Education and Skills structure chart



Our context



- In 2016, 60,666 children and young people aged 0-18 lived in Newcastle. By 2030, the number of children and young people aged 0-18 in the city is forecast to increase by between 5,000 and 8,000.
- In January 2018, there were 40,331 pupils aged 3 to 19 years in Newcastle state-funded schools and academies. This is around 3,500 more than 5 years ago.
- Recent growth has been largely in the primary age population but larger cohorts are now starting to move through into secondary putting pressure on secondary places.
- The largest cohort (Jan 2018) was Y2 with 3,330 pupils, 759 (30%) more than in Y11, the equivalent of 25 additional classes per year group (or 3 secondary schools).
- Alongside the increased number of pupils there have been some significant changes in the characteristics of Newcastle's population. In particular, the number and proportion of pupils from black and minority ethnic (BME) backgrounds has increased from 24% of the school population in 2011 to 31% in 2017.
- More than a quarter (26.5%) of primary pupils are eligible for free school meals, the highest rate in all 150 LAs, compared to 13.7% nationally.
- The proportions of children and young people who are the subject of child protection plans or who are looked after are higher than national averages.

Our current position



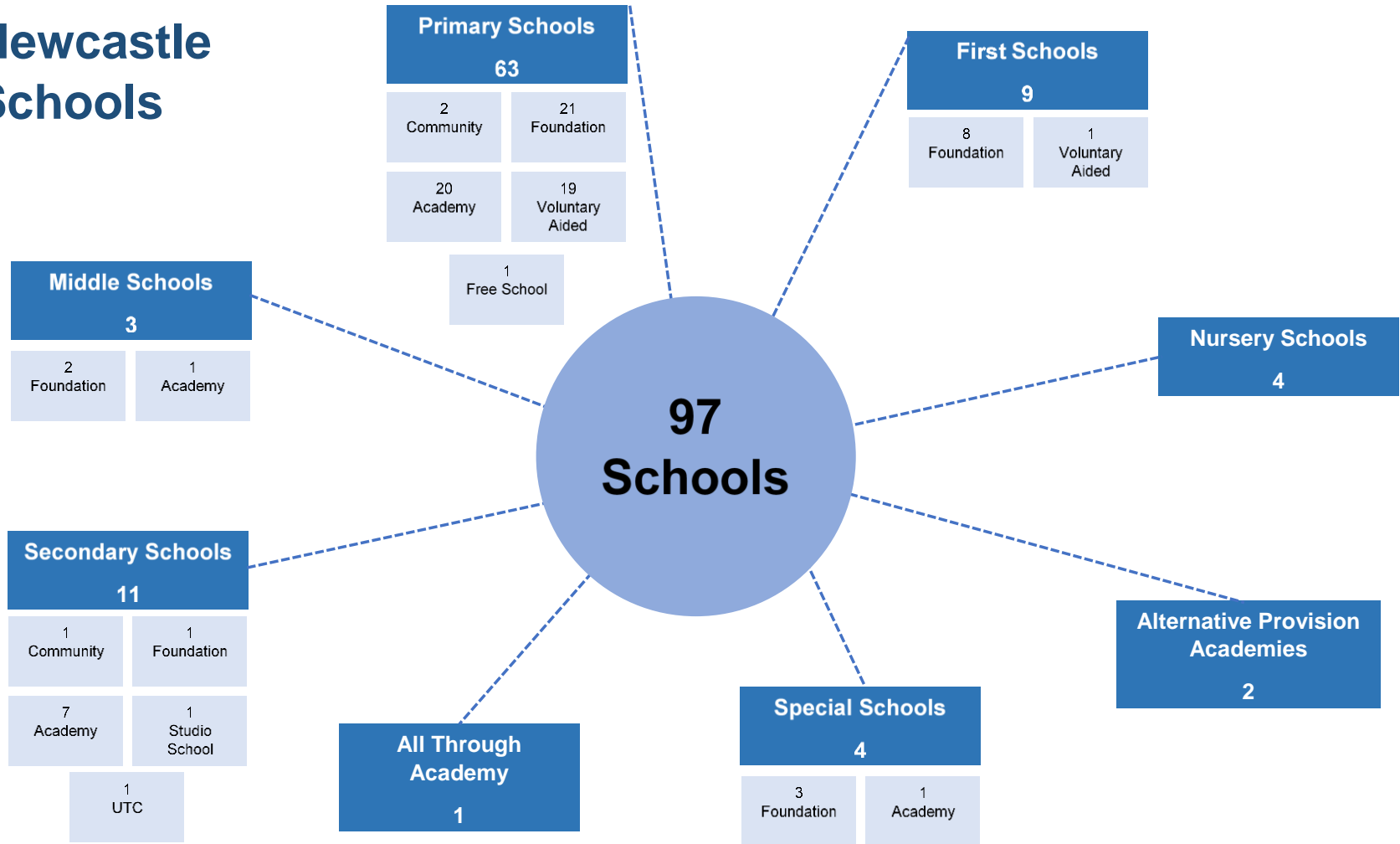
- Outcomes for primary pupils in the city are good - Early Years Foundation Stage, Year 1 Phonics, Key Stage 1 and Key Stage 2 remain strong and are, in some subjects, in the top quintile (20%) nationally.
- Outcomes for older children vary widely across the city. Outcomes for schools with a more disadvantaged population have been below average for the last 2 years. However, in these schools English and maths results improved rapidly in 2018.
- The progress of vulnerable and disadvantaged children is stronger in primary than it is in secondary.
- The proportion of pre-school settings and childminders judged by Ofsted to be good or outstanding is very high at around 95%.
- The proportion of good and outstanding primary and first schools is around 89%.
- The proportion of good and outstanding secondary and middle schools is too low and stands at around 67%. All but one of the secondary schools are now academies or have academy orders.
- The Newcastle Promise Board now represents almost all schools in Newcastle and is increasingly involved in setting and delivering education priorities in the city.
- In recent years we have created more than 1500 additional school places, mostly in the primary sector. The focus is now on creating additional secondary places, including two new schools.



About schools in Newcastle



Newcastle Schools



Our priorities

No school or child left behind



- Continue to embed the new school-led model of educational improvement through the support of all headteachers and further develop the Newcastle Promise Board to fulfil the ambitions of the Newcastle Promise.
- Improve the support provided to schools for the most vulnerable pupils in order to reduce the number of fixed term and permanent exclusions they receive, raise their attendance and improve their educational outcomes.
- Continue to implement the outcomes of the High Needs Review and the actions from the recent SEND local area inspection.
- Complete the restructure of the Education and Skills Division to ensure that it is fit-for-purpose and can fulfil all of its statutory responsibilities to the highest standards.
- Continue our programme of investment to create additional good quality school places where they are needed, supporting the city's ambitious plans for housing growth.
- Develop the support for Post 16 students, especially the most vulnerable.
- Begin to exploit the opportunities through the North of Tyne Education Challenge in partnership with Northumberland and North Tyneside.



Education & Skills funding



- The Assistant Director is responsible for managing DSG of £219m plus a gross operating budget of £48m, of which £4m is funded from council resources.



Useful links



[Education Annual Report 2017](#)

[Newcastle Virtual School Annual Report](#)

[Newcastle Local Plan: Education Plan](#)

[Development and Allocations Plan \(DAP\)](#)

[Newcastle SEND Local Offer - Updates](#)

[Services to Schools](#)

